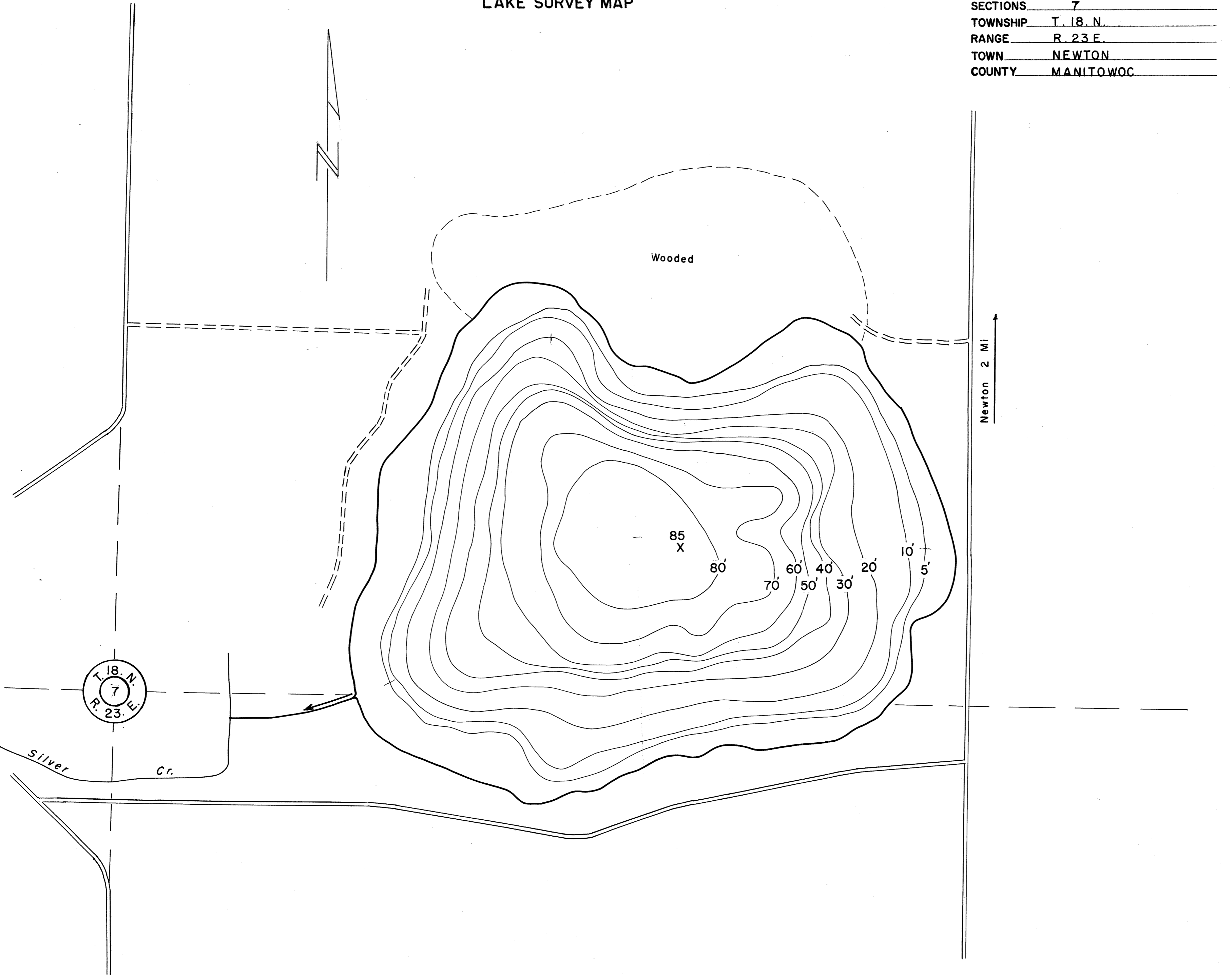


LAKE SURVEY MAP

LAKE ENGLISH  
 SECTIONS 7  
 TOWNSHIP T. 18. N.  
 RANGE R. 23 E.  
 TOWN NEWTON  
 COUNTY MANITOWOC



LAKE MAPPED 10/28/56  
 SOURCE OF INFORMATION W. C. D.  
 SOUNDINGS \_\_\_\_\_

AREA 48.54 A.  
 TOTAL SHORELINE 1.1 Mi.  
 MAX. DEPTH 85 Ft.  
 SCALE: 1" = 200'

Source: Wisconsin Department of Natural Resources 608-266-2621  
English Lake – Manitowoc County, Wisconsin DNR Lake Map  
Date – Oct 1956 - Historical Lake Map - Not for Navigation  
A Public Document - Please Identify the Source when using it.